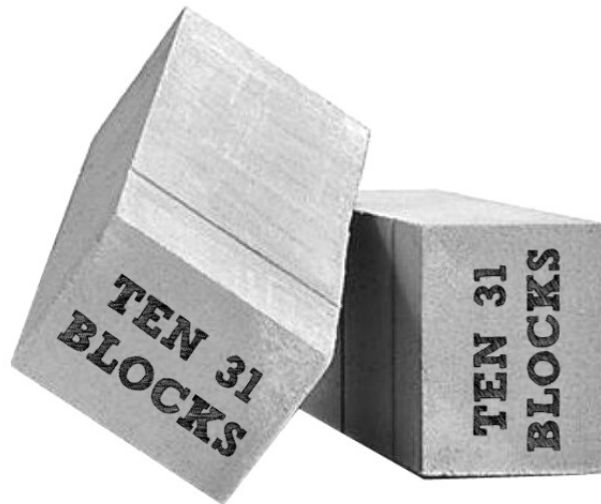
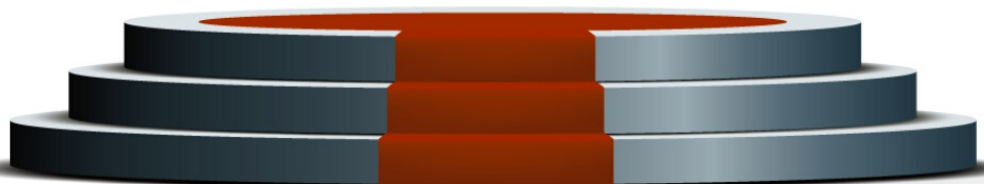


*Ten 31*

AAC BLOCKS



[www.ten31.in](http://www.ten31.in)



# Who we are ?

TEN 31 is a **Jharkhand based start-up** providing the latest and best solutions for construction of walls. Through our AAC products manufacturing at a rural village of Jharkhand we seek to deliver world class products and utmost benefits to each and every individual of society.

In an era where the world is shifting from fluorescent bulbs to LED Bulbs, Gasoline engines to Electric motors, plastic bags to paper bags and many for green initiatives, we wish and work to bring this **environment friendly** concern towards the construction industry and deliver a product twice as strong and half as expensive as clay bricks which will also help us to **build a sustainable future**.

At TEN 31 we look forward to bringing an end to the unnecessary mining of soil, wastage of water from curing of walls, emission of harmful toxicants into the atmosphere and desertification of land by dumping of industrial waste like **fly-ash**.

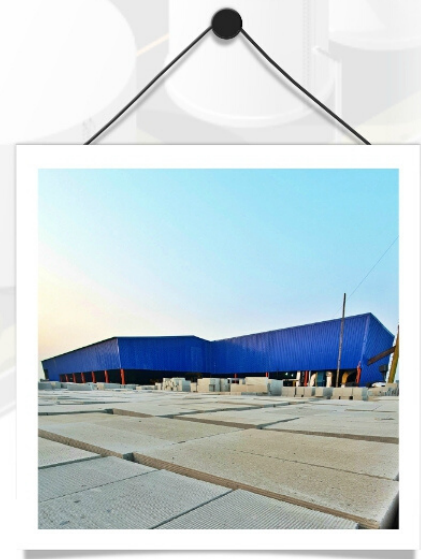


# How we do it?

TEN 31 Blocks are manufactured at our highly efficient manufacturing unit with **modern technologies** using sustainable resources. Our team of highly skilled professionals work with the sole aim of delivering uniform, standardized and a **world class product**.

In our manufacturing facility we give utmost priority to the quality of Raw materials (like Cement, Gypsum, Lime, Aluminium Powder, Soluble Oil etc.) used and are only taken into the process after requisite lab testing.

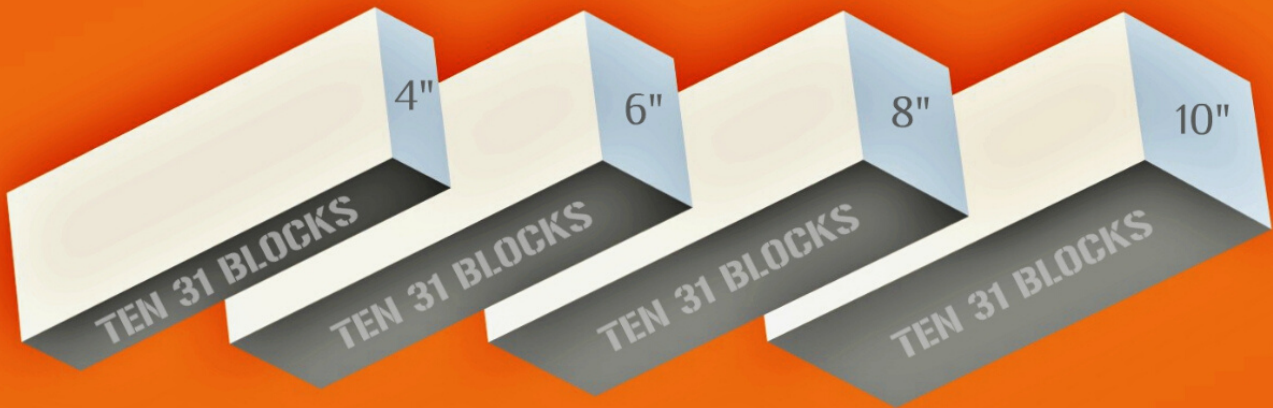
Our **state-of-art** unit can produce up to 16000 Blocks (Equivalent to 1,10,000+ bricks) per day which enables us to fulfill all types of requirements from individual houses to commercial structures, from single time orders to regular builders & government projects. The in-house delivery system ensures timely dispatch of orders.



# What we do ?

TEN 31 Autoclaved Aerated Concrete (AAC) Blocks are an **update** over conventional bricks that through its technical advancements solves many severe problems like seepage of water, cracks on plaster, Putty flakes (papdi), increased load on tie-beams and pillars and also helps constructing much better thermal-insulated and sound-proof walls.

## Perfectly & Precisely Machine Cut



**600mm (24") Long & 200mm (8") High as per IS Code 2185**

TEN 31 (AAC) Blocks are the **most modern and advanced** form of brick in the world, manufactured using top notch technology, process and **high quality raw materials** that fits all the requisites of today's construction needs. The superior fit and finish, cost saving and countless advantages make it the most preferred choice of every Civil Engineer, Architect and Builders.

TEN 31 Blocks not only makes your home but also the planet worth living by protecting it from **Soil Erosion, River Sand Mining, Air Pollution and Wastage of Ground Water.**

# Analysis



| SPECIFICATIONS       |  |   |
|----------------------|--|---|
| PARAMETER            | TEN 31 BLOCK   | RED CLAY BRICK  |
| SIZE                 | LENGTH : 600mm (24 inches)<br>HEIGHT : 200mm (8 inches)<br>WIDTH : 100-250mm (4-10 inches) | LENGTH : 9 inches<br>HEIGHT : 4.5 inches<br>WIDTH : 2.75 inches |
| PRECISION IN SIZE    | Very Precise: Zero to maximum of (+/-) 3mm variation                                       | Very uneven; Variation of (+/-) 5 to 15 mm is common            |
| COMPRESSIVE STRENGTH | 4.0 to 5.2 N/mm <sup>2</sup>   | 2.5 to 3.5 N/mm <sup>2</sup>                                    |
| DRY DENSITY          | 551-650 Kg/m <sup>3</sup>  | 1800-2000 Kg/m <sup>3</sup>                                     |
| THERMAL CONDUCTIVITY | 0.16-0.24 W/m-k  | ~0.81 W/m-k   |

## SIZE CHART

| 1 CMT     | 1000mm X 1000mm X 1000mm     | 545              | Bricks        |
|-----------|------------------------------|------------------|---------------|
| THICKNESS | DIMENSIONS                   | QUANTITY         | (approx.)     |
| 4"        | 600mm X 200mm X <b>100mm</b> | <b>83 Blocks</b> | 1 = 6 Bricks  |
| 5"        | 600mm X 200mm X <b>125mm</b> | <b>66 Blocks</b> | 1 = 8 Bricks  |
| 6"        | 600mm X 200mm X <b>150mm</b> | <b>55 Blocks</b> | 1 = 10 Bricks |
| 8"        | 600mm X 200mm X <b>200mm</b> | <b>41 Blocks</b> | 1 = 12 Bricks |
| 9"        | 600mm X 200mm X <b>225mm</b> | <b>37 Blocks</b> | 1 = 14 Bricks |
| 10"       | 600mm X 200mm X <b>250mm</b> | <b>33 Blocks</b> | 1 = 16 Bricks |



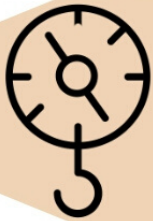
# Advantages



Ten 31

# Why its better ?

The air bubbles formed during the manufacturing of TEN 31 Blocks form a honeycomb structure which provides high compressive strength, also the use of high quality raw materials like OPC cement, gypsum etc. increases the binding force at the molecular level.



TEN 31 Blocks when submerged in water, floats up magically. They weigh 1/3rd of what clay bricks weigh and yet are stronger. This saves up to 20% on the cost of structure by decreasing the dead loads of the building.

The large size, uniform shape, precise cut and unmatched finish helps in rapid construction of superior quality walls which are Water Resistant, Fireproof, Earthquake Proof, Pest Proof and has high Thermal and Noise Insulation properties.



TEN 31 Blocks are very cost effective as it saves on labor, sand, cement, plaster, water, structure, wastage etc. leading up to 30% savings in the cost of the project. Constructions made of TEN 31 Blocks also leads to increased carpet area and lower electricity consumption.

Though quite new in India, AAC Blocks are very well trialled & tested product being used in other parts of the world like Europe and UAE for over 70 years. AAC blocks are much better than conventional bricks to fight the effect of weather and have proven to be highly durable.



# The magic mortar!



**Pre-mixed &  
Easy to use**



**No Shrinkage  
Cracks**



**High Bonding  
Strength**

**High Coverage  
Area**



**No Curing  
Required**



**Super Fast  
Setting**



**Convenient  
40 KG bag**



# Projects

## Large construction with AAC Blocks in Jharkhand



VIDHAN SABHA, RANCHI



NEW HIGH COURT, RANCHI

## Projects constructed with TEN 31 AAC Blocks



Mahabir Trade Complex, Gamharia

Aakash (India) Projects & Builders Pvt. Ltd.

Sai Ridhi Sidhi Developers, Jamshedpur

Delhi Public School, Chanakyapuri

Residential Houses, West Singhbhum



Life Hospital, Chaibasa

Sadar Masjid, Chaibasa

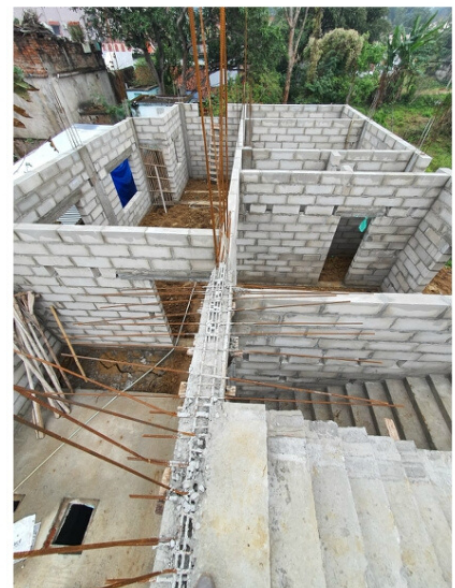
Hotel Saffron Suites, Chaibasa

Life Line Hospital, Chas

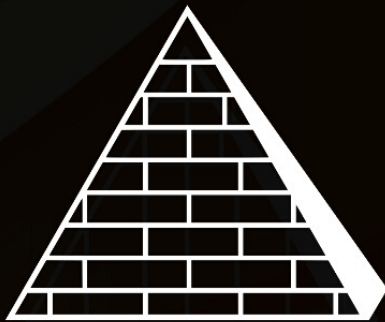
Brightway Academy, Chaibasa

Girls Hostel at Tambo

Swachh Bharat Souchalay



*Thank You*



Address: 65, S.P.G. Mission Compound,  
Chaibasa, West Singhbhum, Jharkhand 833201  
+91 7781944411 | [chirania.mohit@ten31.in](mailto:chirania.mohit@ten31.in) | [www.ten31.in](http://www.ten31.in)  
[www.facebook.com/ten31company](https://www.facebook.com/ten31company)  
[www.indiamart.com/tenthirtyone](http://www.indiamart.com/tenthirtyone)

*Ten 31*